

# 2021 Annual Report

Southern Maryland Tri-County  
Community Action Committee, Inc.



# Table of Contents

Board of Directors - 03

About SMTCCAC - 04

President's Message - 05

Office of Home Energy Program (OHEP) - 06

Friendly Health Services - 07

Internship Program - 08

Head Start & Early Head Start Program - 09

Commercial Driver's License - 16

The Emergency Food Assistance Program (TEFAP) - 17

Housing Programs - 18

Affordable Housing - 19

Communities We Serve - 20

Summary of Assets - 22

Statement of Financial Position - 23





# Board of Directors

The agency is governed by a volunteer board of directors, with equal representation from Calvert, Charles, and St. Mary's counties' consumers, representatives from the private sector and representatives of local elected officials. These volunteers help to govern SMTCCAC and lead the strategic direction of operations. They also serve as strong stewards of our valuable resources. Below is our leadership, which includes our President & CEO for 2020.

## **PRESIDENT**

*Michael E. Young, President/CEO*

## **OFFICERS**

*Joseph Frederick - Chairperson*

*St. Mary's County*

*Rev. Ernest Downs- 1st Vice Chair*

*Charles County*

*Anita Bracher-Butler - 2nd Vice Chair*

*Charles County*

*Veronica Kelly - Treasurer*

*Charles County*

*Ronald Clark - Secretary*

*Calvert County*

## **BOARD MEMBERS**

### **Calvert County**

*Josephus L. Harris Jr.*

### **Charles County**

*Delois M. Barnes*

*Reuben Collins, III*

### **St. Mary's County**

*Mary E. Dryden*

*Wanda White*

*Garnell Miles*

## **OUR MISSION**

*To provide services for eligible citizens that alleviate the causes and conditions of poverty, promote upward mobility, and enrich the quality of life.*

## **OUR VISION**

*To create opportunities for all citizens to realize their potential to become self-sufficient.*



## **THE COMMUNITY ACTION PROMISE**

Community Action changes people's lives, embodies the spirit of hope, improves communities, and makes Southern Maryland a better place to live. We care about the entire community, and we are dedicated to helping people help themselves and each other.



# About SMTCCAC

Southern Maryland Tri-County Community Action Committee, Inc. (SMTCCAC) was incorporated as a 501(c)(3) in August 1965. This occurred after three Calvert County residents acted out of concern over the level of poverty in their county. The governing board of the agency has been composed of Calvert, Charles, and St. Mary's county residents in equal proportions. Since then, the county commissioners from the three counties designated SMTCCAC as the official recipient of Economic Opportunity Act funds in 1965. Tri-County Council for Southern Maryland was responsible for the first funds received to begin operations after they submitted an application for funding on behalf of SMTCCAC.

The agency continues to deliver a robust number of programs geared to meet the needs of the Tri-County community. Our Board completed a strategic plan in 2020 to review current needs to determine if there are any gaps in services provided by the agency. We continue to partner and collaborate with other partners to ensure that the residents receive services or referrals as needed. SMTCCAC has worked diligently this year to offer needed services to combat poverty and to help those in the community that require intervention and service as needed.

## 2021 Programs & Services

- Affordable Rental Housing
- Career Training School for Class B Commercial Driver's License
- Head Start Program
- Energy Assistance Program
- Friendly Health Services
- Internship Program
- Housing Opportunities for Persons with AIDS (HOPWA)
- Housing Counseling
- The Emergency Food Assistance Program (TEFAP)





# President's Message



The year 2021 has been the year of transformation and to rise beyond the expectations for our agency and the communities. We continued to strengthen and expand our existing programs with the use innovative technology to keep the agency and the community engaged. The Board and staff have continued to emphasis the agency's three core principals under the Mission, the Vision, and the Community Action Promise.

As part of the COVID preparedness, we have followed the CDC guidelines to ensure the safety of our staff and the citizens within our communities. We have transitioned to laptops and soft phone service to give our staff the ability to be responsive to the citizen of the communities.

SMTCCAC, Inc. will continue to implement new programs to combat the challenges of poverty evolved around issues of affordable and safe housing; education and school readiness for our children; care for our fragile/mentally & physically challenged seniors; training for job opportunities; community development; and financial resources for sustainability.

We appreciate the staff, volunteers, funders and stakeholders for your dedication and generous contribution during a year of transformation. We have improved strategies to broaden our impact and expand services with our community. But our work is never done. We look forward to your continued dedication and contribution to improve the quality of life and sustainability for citizens of Southern Maryland. We are “changing lives” and “changing our communities.”

It's a pleasure to share the results of the dedicated team and your contribution at work. This report will reflect on the impact of Southern Maryland Tri-County Community Action Committee, Inc. (SMTCCAC) and the citizens within the communities it touched.

Respectfully,

Michael E. Young, MSW  
President/CEO



# Office of Home Energy Program



The Office of Home Energy Program provides bill assistance to low-income households throughout Maryland. As a sub-grantee of the Department of Human Services, SMTCCAC administers the program in Calvert, Charles, and St Marys Counties. Over the past program year, 6792 applications were processed. 4045 households received \$7,532,046 in grants to help lower the cost of electric and heating in their homes. Benefits are provided through 4 programs: EUSP (Electric Universal Service Program), MEAP (Maryland Energy Assistance Program), EUSP Arrearage Retirement and Gas Arrearage Retirement.

**EUSP** provides a monthly credit to a customer's account along with budget billing to assist with managing monthly bills.

**MEAP** provides assistance with heating costs in the home. Heating sources could be electric, oil, kerosene, propane, utility gas, wood, or pellets

**EUSP Arrearage Retirement and Gas Arrearage Retirement benefits** help with past due amounts on a customer's electric account or utility gas account. An arrearage grant may only be used once every five years with amounts greater than \$300 and up to \$2000

This program year households were challenged with more financial burdens due to COVID-19. Some relief was provided through COVID Arrearage grants. Households that previously received OHEP grants since February 2017 were eligible to receive this additional benefit towards past due amounts on their electric accounts.

Vendor and partnership collaborations are an important part of administering the programs. This past year, Hollywood-Leonardtown Optimist Club donated oil to two OHEP customers. Each received 100 gallons in addition to the benefit through MEAP.

COUNTY	MEAP		EUSP		Electric Arrearage		Gas Arrearage		COVID Arrearage		Benefit Totals	
	#HH	\$	#HH	\$	#HH	\$	#HH	\$	#HH	\$	#Benefits	\$
CALVERT	708	424,155	699	479,582	154	176,948	10	5,129	483	296,644	2,054	1,382,459
CHARLES	1,818	1,052,405	1,777	1,157,338	334	323,074	58	41,809	1,436	782,009	5,423	3,356,634
ST. MARY'S	1,519	966,125	1,467	968,624	239	231,038	12	7,986	1,167	619,181	4,404	2,792,953
<b>TOTAL</b>	<b>4,045</b>	<b>2,442,685</b>	<b>3,943</b>	<b>2,605,544</b>	<b>727</b>	<b>731,059</b>	<b>80</b>	<b>54,924</b>	<b>3,086</b>	<b>1,697,834</b>	<b>11,881</b>	<b>7,532,046</b>
<b>AVERAGE BENEFIT</b>	<b>\$604</b>		<b>\$661</b>		<b>\$1,006</b>		<b>\$687</b>		<b>\$550</b>		<b>\$634</b>	

**Members Helping Members** is a program funded by community members through Southern Maryland Electric Coop (SMECO) to assist other SMECO customers that are ineligible for OHEP or need additional assistance with past due electric bills. 69 households received \$29,374.03 from grants in the Tri-County area.





# Friendly Health Services

## *Serving the Needs of Calvert County Disabled and Elderly Residents*

Friendly Health Services (FHS) is certified as a Medical Adult Day Center facility by the Maryland Department of Health and Mental Hygiene. The program is located in Calvert County, Maryland. On March 16, 2020, all Adult Medical Day Care (AMDC) facilities in the State of Maryland were closed until further notice as ordered by Governor Lawrence Hogan Jr. in response to the COVID-19 pandemic. This unexpected event placed a significant burden on all Adult Medical Day Care Center participants, families, caregivers, and staff as changes in scheduling and suspension of day program services occurred immediately.

During the pandemic, Friendly Health Services has remained vigilant and committed to implementing innovative strategies to serve participants in need. The Maryland Department of Health granted temporary authority to waive or modify requirements so that Adult Day Centers could continue to provide essential programs and services to participants safely and without undue delay during the COVID-19 pandemic.

Since March 2020, Friendly Health Services provided an estimated 3,638 participant care days remotely to participants in the community. Remote services entailed providing a wide spectrum of services to vulnerable seniors with health needs with the goal of reducing isolation, promoting a level of independence, and providing technical assistance to caregivers and families to reduce chronic health issues. Friendly Health Services was also awarded a Calvert County grant by Maryland Department of Health to provide services to seniors in the community that were displaced because of an Adult Medical Day Center facility closure in the county. On October 4, 2021, Friendly Health Services re-opened its doors to provide optimal care to seniors that includes activities of daily living (ADL) skills, healthy eating, exercise, and socialization.

Friendly Health Services has been a strong advocate for the needs of seniors and has offered programming for the past 20 years in the Calvert community.





# SMTCCAC Internship Program

## *Providing Opportunities to Students In The Tri-County Area*

The SMTCCAC Internship Program provides students with an opportunity to gain experience and training in a non-profit setting across all undergraduate and graduate disciplines. Interns work in various SMTCCAC programs including Head Start, Friendly Health Services, Housing Counseling, etc. to provide services, referrals, guidance, and support to customers. Interns are supported by site supervisors and the Internship Coordinator who oversee day-to-day tasks. During their internship, all interns receive assistance with job placement, resume writing, and job readiness. Students also receive a monthly stipend and mileage reimbursement. When their internships are complete, the students receive priority consideration for open positions at the agency. The SMTCCAC Internship Program placed 8 interns into various agency programs for the FY20-FY21 year.

### Highlights

**Head Start** - Completed 271 virtual family contact visits, providing family support and assistance in preparing for the transition to kindergarten.

**OHEP** - Served 42 households with energy assistance.

**Friendly Health Services (FHS)** - Attended to the special needs of adults with dementia and Alzheimer's disease as well as the physical and emotional needs of the frail elderly.

**Housing Counseling** - Provided follow up housing counseling sessions, phone calls and appropriate out materials gathered for clients. Provided emergency rental assistance to 13 households.





# Head Start & Early Head Start Programs

## HEALTH AND SAFETY

The Head Start program emphasizes the importance of early identification of health and/or mental health needs, which, if undetected or untreated, might cause learning difficulties. The program makes every effort to ensure that each child is connected to a doctor or clinic in order to receive a complete age-appropriate health assessment as recommended by his/her physician. Health screenings are performed throughout the school year and SMTCCAC, Inc. follows the guidelines outlined in Early Periodic Screening Diagnosis and Treatments (EPSDT). Due to the impacts of COVID-19, parents were empowered to engage with the children's primary provider as much as social distancing and other guidelines allowed.



We engaged families through our virtual platform and the sharing of resources that empowered them and continued to advocate for the health needs of their children.

## MENTAL HEALTH DISABILITIES

SMTCCAC, Inc. believes all children can learn. It is up to the Educator to find out how that child learns. Due to the impacts of COVID-19, in-person assessments were discontinued. However, Family Advocates worked to connect families with community agencies that provided mental health services. Additionally, we informed families of our abilities to support them through our mental health consultant if their needs merited readily available support.

## SCHOOL READINESS GOALS

At SMTCCAC, Inc. Head Start School Readiness Goals (SRG) approach means that children are ready for school, families are ready to support their children's learning, and schools are ready for children. One of the ways SMTCCAC, Inc. partners with Charles County Public School (CCPS) is to ensure an effortless transition for students and families. The receiving school is provided a Transport to Kindergarten Form. This form includes individualized information on each child transitioning. To further ensure that transitioning children are prepared for kindergarten, SMTCCAC, Inc. partners with the Judy Center. The Judy Center is a State -wide initiative that prepares children and families for overall school success.

Due to the impacts of COVID-19, our Summer Program was not offered.



# Family Engagement

## POLICY COUNCIL

The Policy Council is part of the shared governance team that includes the Board of Directors, program staff, community members, and Parent Committee members. Together the team plans and makes decision to achieve positive outcomes for children and families. Policy Council assists program staff in developing plans, policies, and procedures to meet Head Start Performance Standards and address needs in the community. Policy Council members participate on the School Readiness Team, Health Services Advisory Committee, and the Self-Assessment Team. The election of officers for Policy Council is held annually in October.

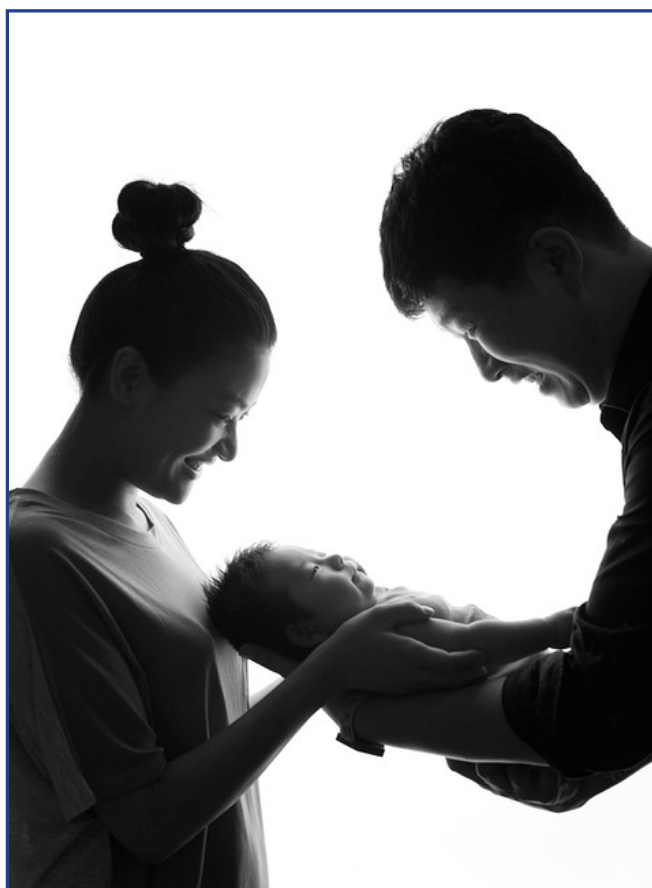
Special Thank you to our families, parents that have worked tirelessly throughout the FY20–FY21 program year even during the pandemic. Your support is appreciated!

## PARENT INVOLVEMENT

Family engagement is a collaborative effort through relationship building among staff, families, community, and children. The relationship is built on mutual respect shared among families and staff for the experiences each brings to the table. SMTCCAC, relationship building starts at the point of entry into the program.

This year Parent Committee spearheaded the first Mother's Day virtual 8-part mini-series in the month of May. Moms' were provided information on financial counseling, home buying, goal planning, fitness, mental health awareness, etc.

For Dad's, the Male Involvement Program sponsored a virtual 8-part mini-series entitled Homeboys' lead by Mr. Ronnie Vanderhorst. Dads were provided with information on parenting, school involvement, family security, self-sufficiency, etc.





# Eligible Children Served

## Family Demographics Head Start

Families Served . . . . .	78
Two parent families . . . . .	15
Single parent families . . . . .	63

### Education

Bachelors degree or higher . . . . .	6
Associates degree or higher . . . . .	3
High School or GED . . . . .	24
Less than high school . . . . .	0
Unspecified . . . . .	45

### Employment

Employed . . . . .	11
Unemployed . . . . .	67

## Family Demographics Early Head Start/EHS-CCP

Families Served . . . . .	82
Two parent families . . . . .	13
Single parent families . . . . .	69

### Education

Bachelors degree or higher . . . . .	13
Associates degree or higher . . . . .	14
High School or GED . . . . .	42
Less than high school . . . . .	3
Unspecified . . . . .	20

### Employment

Employed . . . . .	13
Unemployed . . . . .	69

## Child Demographics Head Start

Funded Enrollment . . . . .	68
Children Served . . . . .	87

### Ethnicity

Hispanic or Latino origin . . . . .	4
-------------------------------------	---

### Race

American Indian or Alaska native . . . . .	0
Black or African American . . . . .	69
White . . . . .	4
Bi-racial or Multi-racial . . . . .	8
Other . . . . .	6

## Child Demographics Early Head Start/EHS-CCP

Funded Enrollment . . . . .	82
Children Served . . . . .	91

### Ethnicity

Hispanic or Latino origin . . . . .	6
-------------------------------------	---

### Race

American Indian or Alaska native . . . . .	28
Black or African American . . . . .	40
White . . . . .	4
Bi-racial or Multi-racial . . . . .	14
Other . . . . .	4
Unspecified. . . . .	1

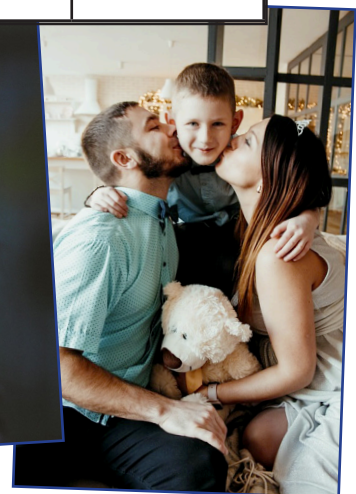


# Child/Family Outcomes

HEALTH OUTCOMES		
	End of Enrollment	
	Number of Children	% of Enrollment
Have Health Insurance	150	98%
Ongoing Source for Medical Care	150	98%
Ongoing Source for Dental Care	150	95%
Have up-to-date immunizations	150	95%



FAMILY OUTCOMES	
Crisis	4
Mental Health Services	0
Adult Education	14
Job Training	17
Substance Abuse Prevention	0
Substance Abuse Treatment	6
Health Education	135
Parenting Education	12
Asset Building	0





# Child Outcomes

On March 20, 2020, Governor Hogan's Executive Order required the closing of the Head Start Centers therefore causing a disruption to the agency's normal assessment schedule.

The following data is representative of 60% of students enrolled and shows students' progress during the Fall Teaching Strategies Gold Assessment.

Results are as follows:

## Social-Emotional:

27.66% Below  
46.81% Meeting  
25.53% Exceeding

## Language:

31.91% Below  
57.45% Meeting  
10.64% Exceeding

## Literacy:

40.43% Below  
25.53% Meeting  
34.04% Exceeding

## Physical:

14.89% Below  
53.19% Meeting  
31.91% Exceeding

## Cognitive:

34.04% Below  
40.43% Meeting  
25.53 % Exceeding

## Mathematics:

34.04% Below  
31.91% Meeting  
34.04% Exceeding



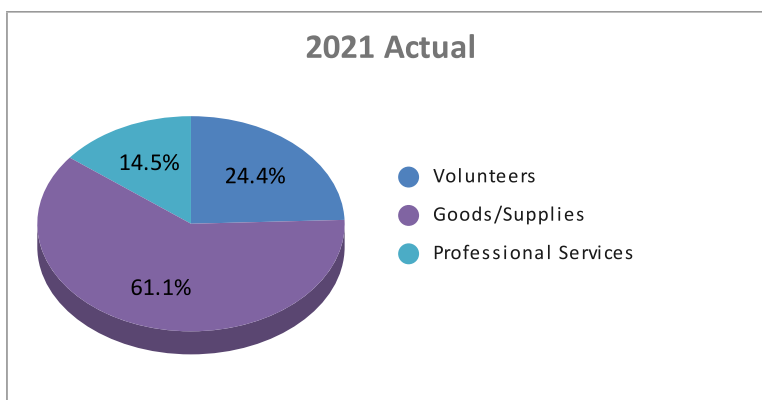
# Head Start - Fiscal Report

Head Start funds are received from the following sources:

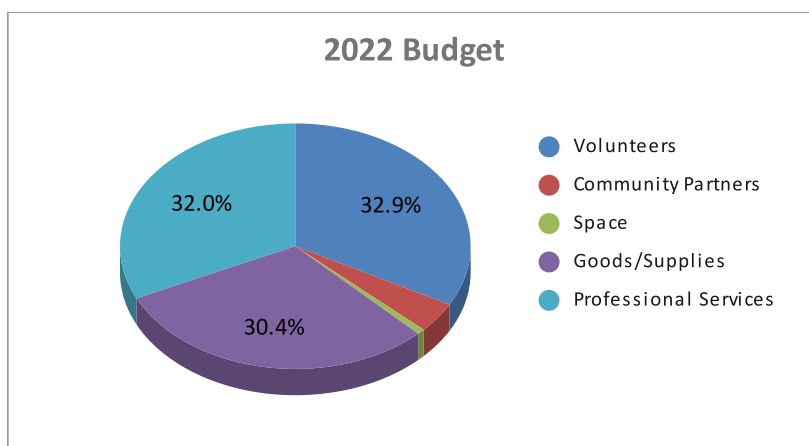
**Federal:** U.S. Dept. of Health & Human Services, Administration for Children & Families  
U.S. Dept. of Agriculture, Child, and Adult Care Food Program  
**State:** Maryland State Department of Education  
**Other:** None

Category	FY21 Budget	FY21 Actual Expenditures				FY21 Total	Percent of Total	FY22 Proposed
		HHS	USDA	MSDE				
Personnel	1,055,247	1,028,284		18,856		1,047,140	50.30%	1,073,040
Fringe Benefits	194,232	240,268	-	5,149	-	245,417	11.79%	219,717
Equipment	-	45,877				45,877	2.20%	-
Supplies	225,875	46,137	1,031	2,923	-	50,091	2.41%	152,370
Contractual	434,791	336,268	-	3,993	-	340,261	16.34%	55,287
Other	152,843	344,997	534	7,588	-	353,120	16.96%	477,864
<b>Total</b>	<b>2,062,988</b>	<b>2,041,832</b>	<b>1,566</b>	<b>38,510</b>	<b>-</b>	<b>2,081,907</b>		<b>1,978,277</b>

## Non-Federal Share:



Source	Amount
Volunteers	144,553.24
Community Partners	17,711.00
Space	3,200.00
Goods/Supplies	133,479.00
Professional Services	140,614.01



Head Start/EHS/CCP were granted an additional funding of \$27,537.00 (COLA), \$179,475.00 (American Rescue Plan), and \$45,145.00 (COVID-19) for FY20.

Fiscal training sessions and reports are provided on a continual basis to the Board, Policy Council and Program Directors to ensure effective communication, understanding, and internal controls.

MANY THANKS TO ALL INVOLVED!





# Locations

## *SMTCCAC, Inc. Head Start and Early Head Start Centers*

### *EHS Child Care Partnership Locations*

#### **Brawners Head Start and Early Head Start Program**

655 Weaver Street  
Indian Head, Maryland 20640

•

#### **J Woodall Head Start Program**

10515 Theodore Green Blvd.  
White Plains, Maryland 20695

•

#### **A Child's Journey EHS Child Care Partnership**

6310 Crain Hwy.  
La Plata, Maryland 20646

•

#### **Little Peoples Child Care Center at Jarboe EHS Child Care Partnership**

26111 Lexwood Drive,  
Lexington Park, Maryland 20653

•

#### **Inspiring Dreams Learning Center, LLC EHS Child Care Partnership**

11695 Doolittle Dr.  
Waldorf, Maryland 20602

•

#### **Visions & Dreams Learning Center, LLC EHS Child Care Partnership**

2200 Old Washington Road  
Waldorf, Maryland 20601



# Commercial Driver's License Program (CDL)

The Commercial Driver's license Class B training (CDL) program here at Southern Maryland Tri County Community Action Committee (SMTCCAC) helps both men and women, regardless of age, to embark on a career that will serve them well. Everything that we use in this country arrives by truck, the clothes on your back, the piece of lumber that builds your house, the food in the grocery store. Teaching people how to drive a commercial vehicle will change their lives both in confidence in themselves as well as monetarily. It will instill in them the satisfaction of knowing that what they are doing is helping other people as well as themselves. The 54- hour evening course not only trains them on how to drive a truck it will also help launch their careers.

Due to the pandemic we had to shut down. We are now reopening to get back on track serving our community. In the time that we were operating we were able to serve 8 students that graduated the program, 4 from Charles County and 3 from Saint Mary's County. They will be qualified to operate dump trucks, concrete mixers, passenger, and school buses.





# The Emergency Food Assistance Program (TEFAP)

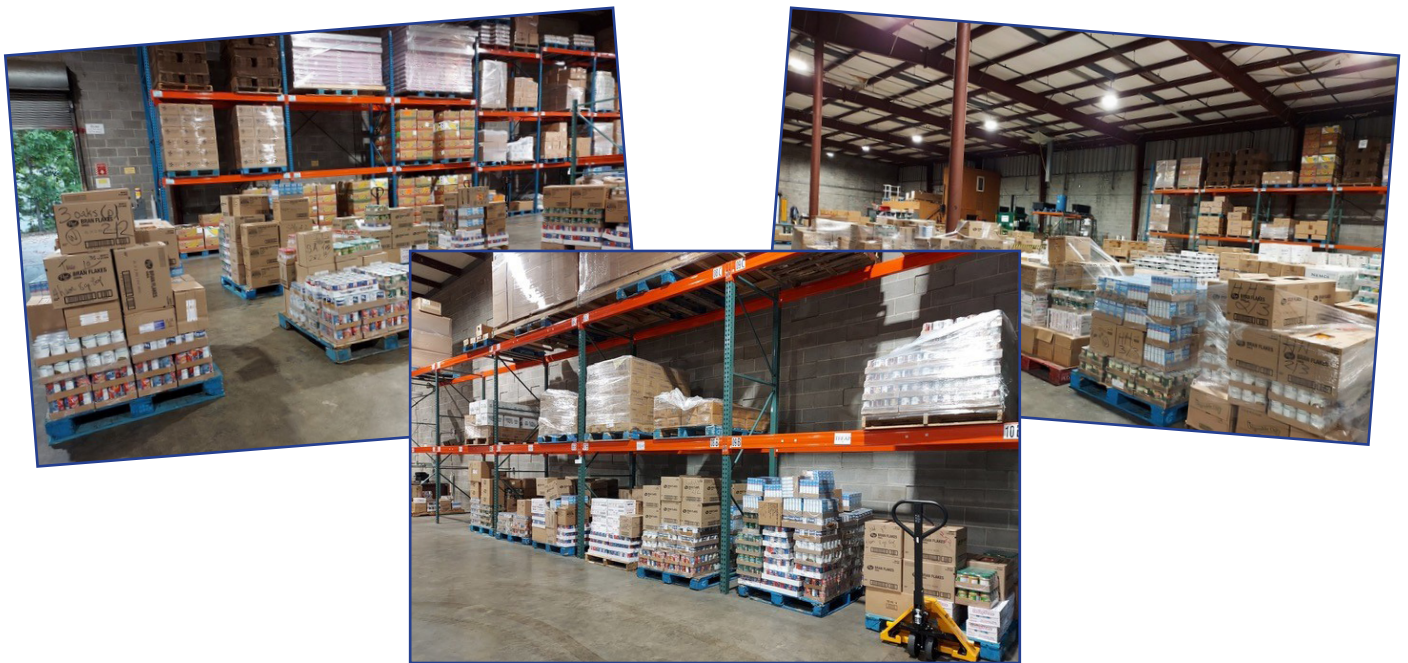
SMTCCAC, Inc. has been involved with The Emergency Food Assistance Program (TEFAP) from 1984 to today. This is a USDA Federal program that provides free food (dry, frozen and refrigerated) to low-income eligible people. In serving the tri-county area, we have successfully implemented this program free from any non-compliance issues throughout that time frame.

**From July, 2020 to June, 2021 TEFAP served the following:**

COUNTY	HOUSEHOLDS	INDIVIDUALS	POUNDS
CALVERT	2,127	4,879	80,578
CHARLES	6,502	20,500	150,436
ST. MARY'S	3,704	31,012	177,894
<b>TOTAL</b>	<b>12,333</b>	<b>56,391</b>	<b>408,908*</b>

**\*Total value of product: \$558,478**

**Seventeen (17) pantries and one (1) shelter partnered with us to disperse the food to those in need.**



This pandemic year presented multiple challenges. SMTCCAC partners with End Hunger in Calvert County (an extremely helpful and valued associate) in sharing a warehouse location. At one point during the year, we had to relocate to a different warehouse due to the Calvert County Health Department needing the space we were using to set up a drive-thru testing site. It was fortunate another warehouse could be secured within the same complex. With energy and cooperation, the move was completed.

Everyone had to alter their method of dispersing the food to comply with CDC guidelines. A few pantries took a short hiatus to reorganize. However, SMTCCAC through the move and other pandemic challenges continued to provide food uninterrupted from the warehouse, never missing a beat.

SMTCCAC's shared mission of helping others and the coordinated efforts with all partners is what makes TEFAP a viable, successful program for so many years.

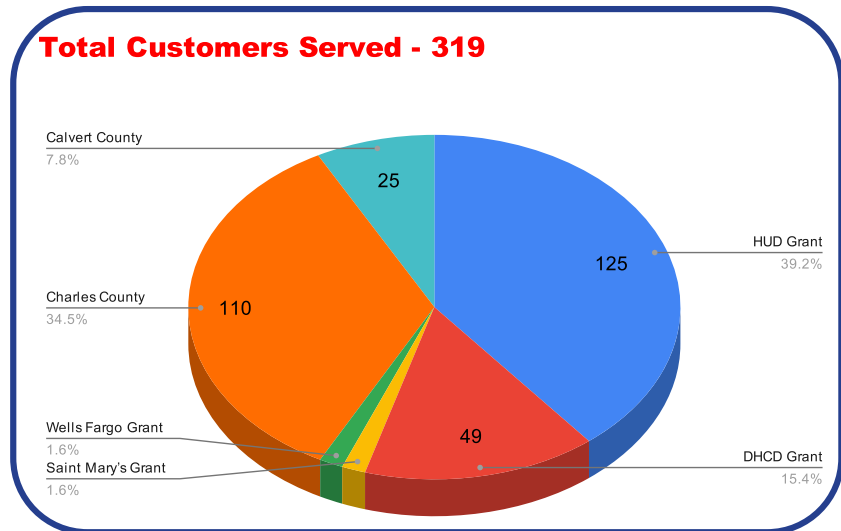


# Housing Programs

## Housing Counseling

Due to the ongoing spread of Covid-19 in 2021, aiding our customers has been challenging. Nevertheless, SMTCCAC's committed Housing counseling team has continued to provide quality service.

The Housing Counseling Services Program provided services for customers as follows: under the HUD Grant 125 customers serviced, 49 customers under DHCD Grant, 5 customers under the Saint Mary's Grant and 5 customers under Wells Fargo Grant for Housing Counseling Services. In addition, approximately 110 families were serviced in Charles County distributing nearly \$700,000 in rental assistance payments and approximately 25 families were serviced in Calvert County totaling \$76,393 in rental assistance payments. During 2021, SMTCCAC's Housing Counseling Team has provided quality caring and professional assistance to customers.



In 2021, the Housing Counseling Services Program continued to assist customers with mortgage and rental issues, foreclosure notifications, pre-purchase counseling, and financial management. SMTCCAC's Housing Counselors are HUD certified and adequately equipped to counsel customers in a variety of areas including student loans, home equity conversion mortgages and consumer debt collection compliance.



## HOPWA

The Housing Opportunities for Persons with Aids (HOPWA) program continues to be administered by SMTCCAC under contract with the District of Columbia Department of Health HASTA program. The HOPWA program supports those who demonstrate financial need and suffer from chronic medical conditions. Support could be in the form of housing assistance payments, case management and/or ongoing supportive services. There were nine (9) HOPWA program participants during fiscal year 2021.





# Affordable Housing

**Southern Maryland Tri-County Community Action Committee, Inc. (SMTCCAC), through its partnerships, provides affordable rentals to residents in Calvert, Charles, and St. Mary's County Residents.**

## Rental Partnerships

SMTCCAC works to establish rental partnerships helping to secure affordable housing for community members in need.



## Management

TM Associates and their team of Property Management Professionals oversee the portfolio of Affordable Housing communities listed below.

## State Grant Programs

In partnering with SMECO through a Grant Program, Yardley I and II had HVAC tune-ups and energy upgrades completed over the past year.



## Community Improvements

In 2020/2021, tree trimming, power washing, drainage repairs, and installation of bike racks were completed throughout the communities.



**Affordable Housing was provided to a total of 537 Residents in the 2020-2021 period within the SMTCCAC and the TM Portfolio.**

## Total Residents Served Per County:

**Calvert County- 474**

**Charles County- 63**



# Communities We Serve

## Affordable Housing



### **The Courtyards at Fishing Creek I**

*30 Garden Apartments- Featuring 1 and 2 Bedrooms*  
3945 & 3955 Gordon Stinnett Ave, Chesapeake Beach, MD  
Low-Income Housing Tax Credit (LIHTC) Serving 62 Residents



### **The Courtyards at Fishing Creek II**

*30 Garden Apartments- Featuring 1 and 2 Bedrooms*  
3925 & 3935 Gordon Stinnett Ave, Chesapeake Beach, MD  
Low-Income Housing Tax Credit (LIHTC) Serving 51 Residents



### **Fishing Creek Townhomes**

*16 Townhomes- Featuring 2 and 3 Bedrooms*  
3861- 3921 Gordon Stinnett Ave, Chesapeake Beach, MD  
Low-Income Housing Tax Credit (LIHTC) Serving 23 Residents

The Courtyards at Fishing Creek 1, 2 and Fishing Creek Townhomes make up a beautiful Community that Residents can't wait to call home. Located within eyesight of the Chesapeake Beach Water Park, with access to beaches, fishing and boating, there is plenty to do outdoors . Courtyards at Fishing Creek has a playground/picnic area with open access for residents.



### **DIGGS CIRCLE**

*20 Townhomes- Featuring 2 and 3 Bedrooms*  
401-430 Nanjemoy Drive, La Plata, MD  
USDA Rural Development Serving 63 Residents

Diggs Circle Townhomes is conveniently located just minutes from Downtown LaPlata, Maryland. With nearby parks and nature preserves Residents will enjoy plenty of outdoor experiences.





# Communities We Serve

## Affordable Housing



### Yardley Hills I

*28 Garden Apartments- Featuring 2, 3, and 4 Bedrooms*  
Orwell + Mint Court, Prince Frederick, MD  
Low-Income Housing Tax Credit (LIHTC) &  
USDA Rural Development - Serving 83 Residents



### Yardley Hills II

*76 Townhomes- Featuring 2 and 3 Bedrooms*  
Conner, Gowan, Sark, Isle Courts, Prince Frederick, MD  
Low-Income Housing Tax Credit (LIHTC) Serving 199 Residents

Yardley Hills Townhomes 1 and 2 make up a beautiful community conveniently located just a mile from downtown Prince Frederick, MD. With washer/dryers in every spacious townhome, Residents will love living here. Take a stroll along the banks of Battle Creek enjoying the beautiful views and tranquility.



### Prince Frederick Villas

*25 Townhomes- Featuring 1, 2, and 3 Bedrooms*  
480-549 Stamper Court, Prince Frederick, MD  
USDA Rural Development Serving 56 Residents

Prince Frederick Villas is a beautiful townhome community located minutes from downtown Prince Frederick, MD. Residents will enjoy serene living while still being close to shopping, dining, and entertainment.



### Hunting Creek

46925 Crocus Street, Lexington Park, MD  
Serving 71 Families Childcare Center on-site



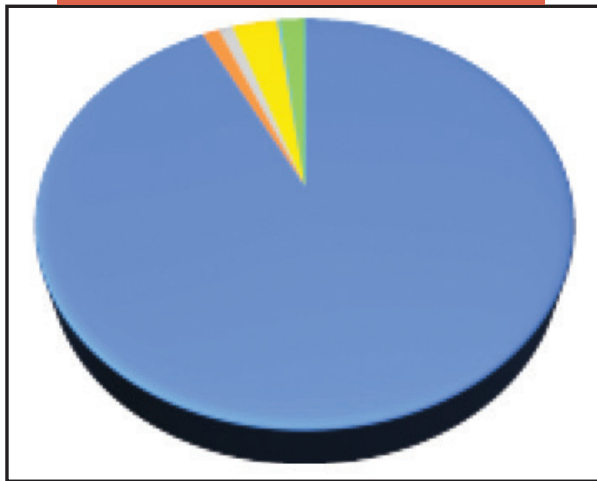
Hunting Creek Apartments and Townhomes is Lexington Park's finest rental home community! Offering pet-friendly one-bedroom apartments and two- and three-bedroom townhomes, you can enjoy the space you need at an affordable rent. Each apartment and townhome features, a private entrance with a porch, a full kitchen with a double sink and modern appliances, wall-to-wall carpeting and best of all, a washer and dryer in each home. Professionally Managed by Habitat America LLC a Women-Owned Business.



# Summary of Assets

## Audited as of 6/30/2021

### REVENUE



Grant	\$ 5,795,839.87
In Kind	\$ 75,412.71
FFS	\$ 64,453.98
Rent	\$ 202,848.29
Other	\$ 13,491.91
Interest	\$ 111,385.22

### Summary of SMTCCAC Assets

Total Assets for the fiscal year ended:

2021 - \$9,354,006

2020 - \$6,496,412

2019 - \$7,019,697

2018 - \$6,715,101

2017 - \$7,271,763

Figures are based on audited amounts.

Copies of SMTCCAC's complete 2020 audited financial statements are available upon request.

### HIGHLIGHTS

The auditor provided a qualified opinion for SMTCCAC's financial statements as of June 30, 2021, confirming that they were fairly presented in all material respects, with the exception of the matter described in the Basis for Qualified Opinion paragraph. The organization has been proactive in addressing the three audit findings for FY21:.

#### Audit Finding 2021-001: Timeliness of Financial Reconciliations

- SMTCCAC faced challenges in obtaining year-end closing entries, schedules, and reconciliations due to turnover in accounting personnel and other external factors. To overcome these challenges, the Agency swiftly contracted with a CPA to review processes, reconcile accounts, and maintain documentation, aiming to prevent future delays.

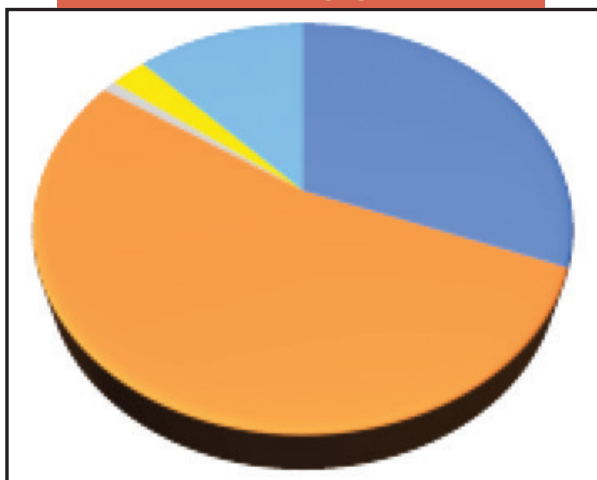
#### Audit Finding 2021-002: Federal Awards Findings and Questioned Costs

- Although only one of the 40 transactions under federal award programs had insufficient documentation, SMTCCAC took this opportunity to further strengthen its accounting processes. The Agency implemented procedures to enhance oversight, account reconciliations, and ensure proper documentation for all transactions.

#### Audit Finding 2021-003: Timely Submission of Single Audit Report

- The single audit report faced delays due to challenges in year-end closing entries, schedules, and reconciliations. In response, SMTCCAC took decisive action by implementing similar corrective measures as in Finding 2021-002, enhancing fiscal efforts and ensuring proper documentation for transactions, thereby promoting greater efficiency in future reporting.

### EXPENSES



Child	\$ 1,958,958.20
Community	\$ 3,399,146.49
Food	\$ 58,401.66
Other	\$ 163,095.81
M&G	\$ 763,946.84





# **Southern Maryland Tri-County Community Action Committee, Inc. Annual Report 2021**



<https://www.smtccac.org/>

Phone: 301-274-4474

[info@smtccac.org](mailto:info@smtccac.org)

